

# CMTS FIELD EDGE SERIES

DOCSIS 3.0 / 2.0 CABLE MODEM TERMINATION SYSTEM

## KEY FEATURES

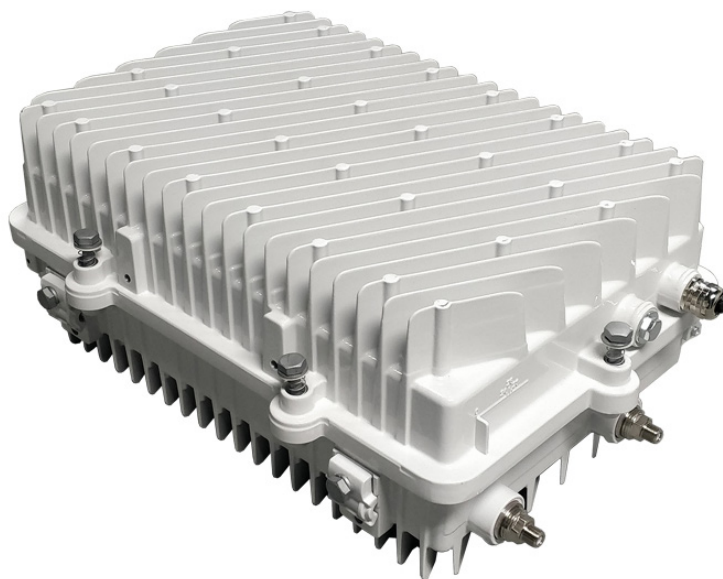
- » DOCSIS/EuroDOCSIS 3.0/2.0 compatible
- » Supports up to 32xDS and 8xUS
- » 10Gbps+ throughput per fiber node
- » Maximum downstream rate of 2 Gbps and upstream rate of 320 Mbps
- » 512CM are recommended and supports up to 1000CM, no need to change optical node
- » Supports CLI / Standalone Web / EMS / Mobile App, and other management modes
- » DOCSIS module supports 10G Combo SFP+ Interface, GE/EPON/GPON and 10G EPON/XG(S)-PON/10GE uplink
- » Power Module supports both local power and cable-based power

## PRODUCT OVERVIEW

The **CMTS Field Edge** is a best-in-class CMTS series built upon a stable and proven Linux operating system, and delivers the industry's best performance, scalability, security, and reliability. It supports DOCSIS, EQAM, and Optical Receiver, which can satisfy applications including internet, voice, VoD, and CATV.

The CMTS Field Edge makes mounting simple and takes up minimal space. The unit supports multiple installations, including field, corridor, wall-mounted, and strand mounting.

There are multiple **CMTS Field Edge** models, giving you the flexibility to deploy an economical solution today, with the availability to scale your throughput as your data rate demands increase.



## ORDERING INFORMATION

MODEL	STOCK#	DESCRIPTION
CMTS Field Edge 16	<b>2349 16</b>	16 Down / 4 Up; DOCSIS 3.0/2.0
CMTS Field Edge 32	<b>2349 32</b>	32 Down / 8 Up; DOCSIS 3.0/2.0

# CMTS FIELD EDGE SPECIFICATIONS



## INPUT / OUTPUT INTERFACES

### DATA PORTS

Up to 10GbE	1x SFP+ Pluggable (Optical/Copper)
100Mbps	1x RJ45 Fast-Ethernet (Management)

### RF UPSTREAM

Connectors	4x "F" Connector
# of Channels	Up to 8, depending on license
Frequency Range	5 - 85 MHz
Modulation Mode	QPSK / 16, 32, 64, or 256 QAM
Bandwidth	1.6 / 3.2 / 6.4 MHz
Receive Levels	-7 to +23 dBmV @ 6.4 MHz -10 to +20 dBmV @ 3.2 MHz -13 to +17 dBmV @ 1.6 MHz

### RF DOWNSTREAM

Connectors	1x "F" Connector
# of Channels	Up to 32 SCQAM, 1 OFDM (optional)
Frequency Range	54-1003 MHz
Modulation Scheme	64 / 256 / 1024 / 2048 / 4096 QAM
Max QAM Output Level (@ 6MHz)	~37 dBmV @ 32 SCQAM & 1 OFDM ~42 dBmV @ 32 channels ~45 dBmV @ 16 channels ~49 dBmV @ 8 channels ~52 dBmV @ 4 channels ~56 dBmV @ 2 channels ~60 dBmV @ 1 channel

## GENERAL

Dimensions (W x H x D)	14.92 x 10.08 x 6.61 in (379 x 256 x 168 mm)
Form Factor	Outdoor Enclosure
Weight	<22.05 lbs (<10 kg) - approximately

## ENVIRONMENTAL

Operating Temp.	-40 ~ 140 °F (-40 to 60 °C) Startup on -13 °F (-25 °C)
Operating Humidity	5% - 95% RH, non-condensing

## SYSTEM FUNCTIONS

DHCP Internal	IPv4 and IPv6
DHCP External	Supports L2 / L3 DHCP / DHCPv6 Relay
IPv4 and IPv6	IPv4 and IPv6 dual-stack
QoS	802.1ad / 802.1q
VLAN	VLAN tagging by device type using option 60
L2VPN	L2VPN support, IGMP v2 / v3 snooping
Security	Shared Secret, PKI
Spread Spectrum	Upstream Automatic frequency hopping
Load Balancing	RLBG / GLBG, Load balance priority
Multicast	Static Multicast verification MLD v1 & v2 IGMP v2 & v3

## POWER

Power Supply	
Local-Based	110-220VAC, 90V~265V, 50/60Hz
Cable-Based	60-90VAC, 36V~110V, 50/60Hz
Plug Type (Local Power Supply)	Type B (NEMA 5-15 U.S. 3 pin), Length: 39.37 in (1000mm)
Power Consumption	75 W
Max. Output Power	100 W
Power Efficiency	85%

## PROTECTION

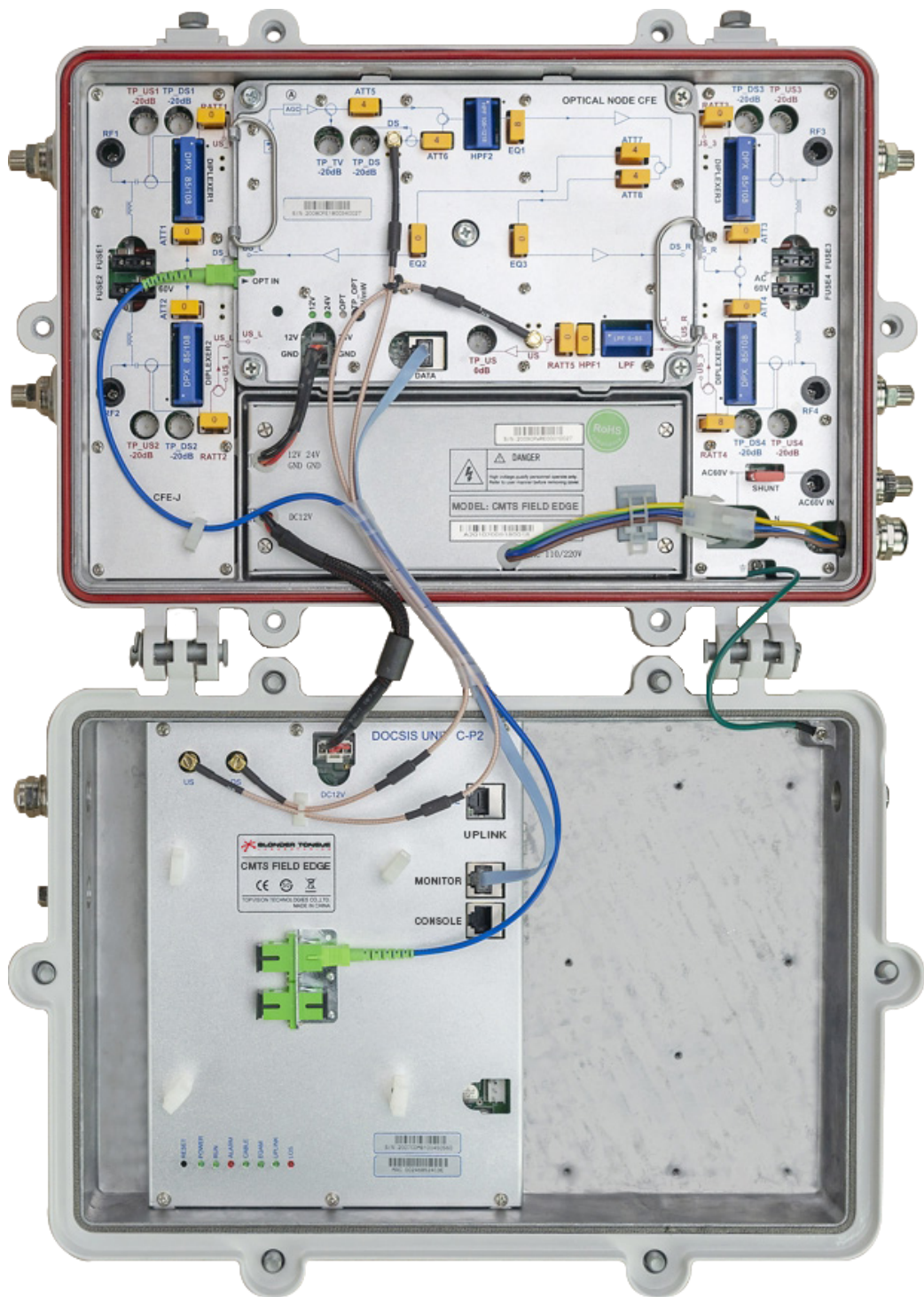
Ingress Protection Rating	IP67
Device Grounding	PGND
Surge Protection Level	6 kV (both common mode and differentiated mode for AC power port)
Overcurrent Protection	Continuous: ≥15A Burst: ≥25A

## ALARMS / MONITORING / CONTROL

Management Connectors	1x GbE RJ45 management interface 1x RJ45 console interface 1x RJ45 monitor interface (transponder interface)
Supported	Optical Receivers module local test point; LED Indicators; Status Control and Monitoring (optional)

# CMTS FIELD EDGE

DOCSIS 3.0 / 2.0 CABLE MODEM TERMINATION SYSTEM





**SALES DEPARTMENT**  
sales@blondertongue.com

**CUSTOMER SERVICE**  
custsvc@blondertongue.com

---

**CONNECT WITH US**

