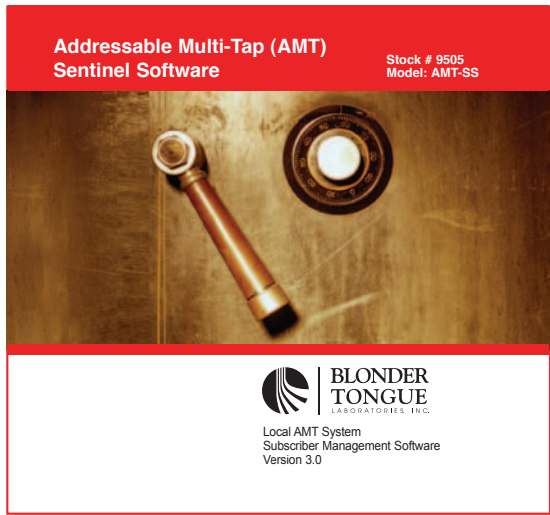


Sentinel Software

AMT Local System Only



The Sentinel Software is for a local AMT system that does not require a billing system interface. One application is for bulk or profit sharing MDU properties where the property management can have remote control from their office to turn on and off the taps. This avoids manual connects and disconnects that may cause CLI problems. By using the Sentinel System, the cable operator can install the Sentinel software on one of the property office PCs, add an ITX to the property, hook it up with a null modem cable, and be ready to go.

The AMT Sentinel Software is run by a Windows personal computer. The PC is connected to an FSK transmitter (ITX) at the property that is combined with the property's RF signal. The FSK data carrier will communicate with the Addressable Multi-Taps (AMTs) on the property and will individually turn the tap port on or off from the PC commands. The software communicates to the Intelligent Transmitter (ITX) through either a null modem or remote modem connection and provides the service updates to the AMTs on a single headend. The Visual Basic program can be installed on any Windows 95, 98, 2000 or XP operating system.

○ Features & Benefits

- Controls AMTs in a Local System Only
- Microsoft Access Database that Stores the Subscriber Information and Service Level
- Change/Refresh Individual Subscriber Service or Entire Headend
- Reports Generated in Microsoft Word

○ Specifications

Minimum PC Requirements

Operating System: Windows 95/98/2000/XP

Processor: Pentium 133 MHz or Equivalent
(500 MHz or Higher Recommended for Large Subscriber Database)

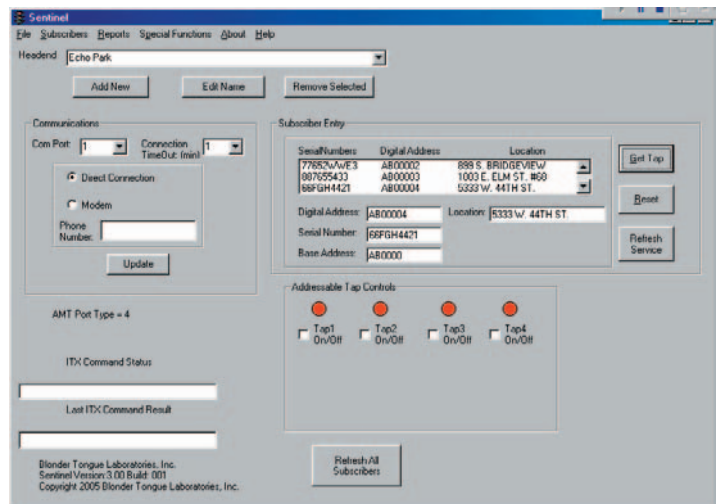
RAM: 64 MB (128 MB or Higher Recommended for Large Subscriber Database)

Hard Drive: 25 MB

CD-ROM Drive: 4xSpeed

Modem: External – US Robotics or Hayes Compatible

Software: Microsoft Word (Required for Generating Reports)



Addressable

○ Ordering Information

Model	Stock No.	Description
AMT-SS-2	9505	Sentinel Software- AMT Subscriber Management for Local System, (no Billing Interface); Windows/PC Compatible (95, 98, 2000)