

MASTERBUILT

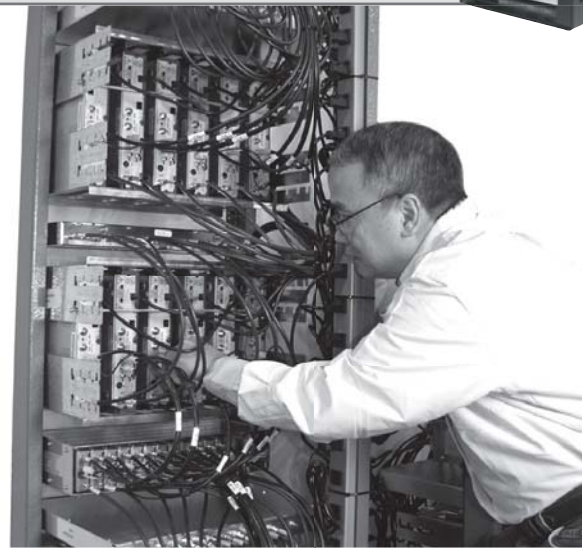
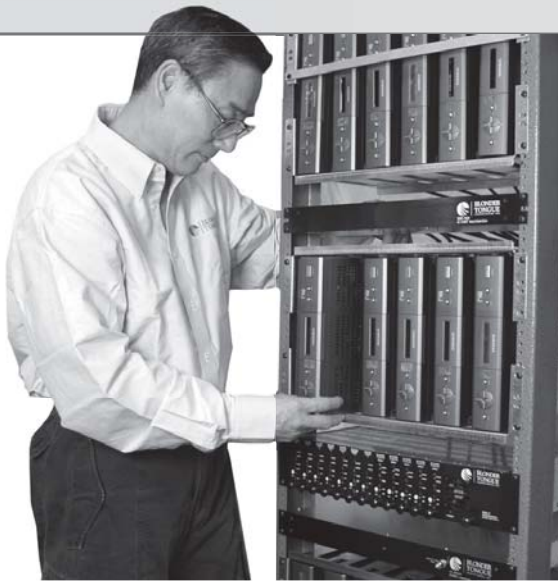
HEADENDS BY BLONDER TONGUE

Cable television has become a standard part of everyday life for the average person. Those familiar with the industry know that there are many differences in the equipment and method by which TV signals are delivered to consumers. It starts with the cable television headend, essentially the heart of the CATV system. The headend is a significant investment and Blonder Tongue believes that sacrifices should never be made when it comes to choosing the right headend solution. We pride ourselves on providing the finest professional quality CATV equipment at an affordable price. Blonder Tongue equipment is often imitated, but never duplicated. We are committed to provide our customers with the finest cable television solutions available.



**BLONDER
TONGUE**
LABORATORIES, INC.

Based on this philosophy, Blonder Tongue went back to the drawing board and refined our process of designing and building “pre-fabricated” headends for customers to create a program to lead the industry. **MASTERBUILT Headends by Blonder Tongue have arrived.**



Masterbuilt

○ Meticulous Installation

MASTERBUILT Headends by Blonder Tongue start with you, our customer, in conjunction with our Technical Solutions team of expert application & design engineers to develop a detailed wiring diagram and rack face elevation for each unique headend requirement. A standard Gold or optional Platinum Assembly process is available.

Extreme care is taken to ensure that every part is meticulously installed to assure that the headend not only looks professional but is optimized for long term operation and easy support. Special attention is paid to every detail, like making sure that every connector is torqued according to industry specifications preventing issues caused by loose or over tightened connections.

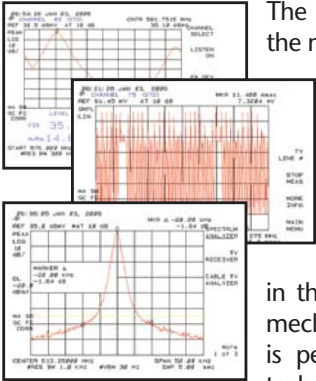
Wiring the headend utilizes the finest techniques found in the industry, including quad shielded, hex crimped RG-6 headend cable, color coded A/V cables, permanent white cable labeling and “service loops” allowing modular components to be pulled to the front for servicing.

The Platinum package adds features like permanent color coordinated labeling on each cable and the option of Snap-N-Seal® or compression fit connectors on silver center conductor, quad shielded RG-6 headend cable. We can even accommodate a request for special customer chosen cable as well. These sound techniques provide value beyond what you can see for the long term viability of the headend and can save large amounts of time and money in maintenance over the years.

MASTERBUILT

HEADENDS BY BLONDER TONGUE

○ Thorough Testing



The balancing and testing process is the most in-depth and intensive portion of the MASTERBUILT headend construction process involving several stages. The first part starts by having each Blonder Tongue unit inspected, burned-in and tested prior to installation in the headend rack. After installation in the rack, a complete and thorough mechanical and electrical inspection is performed by an independent QC technician. After a headend achieves the QC sign off it undergoes a second extensive 24-hour burn-in process to ensure all units are functioning at full operating temperature.

Now, the headend is rechecked for the correct output levels and balanced for maximum performance. State-of-the-art test equipment like spectrum analyzers, audio demodulators, a VM-700 measurement unit as well as custom designed equipment

are used to perform a detailed and exacting proof of performance verification test on the entire headend. Detailed measurements covering carrier frequency, spurious, audio deviation, video level and quality for each analog channel, carriers for digital signals, (if applicable), as well as combined RF data is captured using Blonder Tongue's custom designed testing software. The data is tracked by serial number for each individual modulated channel and is optionally available for electronic customer retrieval. Composite Triple Beat (CTB) and Composite Second Order (CSO) tests are also performed to ensure complete compliance.

Plus, all Blonder Tongue supplied equipment is UL Listed, an optional UL Listing certification test can be performed on the entire headend as well.



○ Custom Packaging & Shipping

When a headend is finished, the next step is to get it to the deployment site. The MASTERBUILT team has taken several unique and extraordinary steps to ensure that your headend arrives intact and functional. First, we strongly believe that the headend needs to be shipped standing up. This accomplishes several things including the elimination of stress on cabling, front panels and screws as well as preventing other items from being stacked on top of a headend rack during shipment.



Next, the headend is prepped by adding foam or corrugated packing materials in between rack units and gaps. The headend rack is then completely wrapped in bubble wrap and plastic. It is secured into a special heavy-duty triwall box that allows the entire area surrounding the headend to be filled approximately 1/2 way up with an expandable commercial foam packing material. This material custom molds itself to the exact physical characteristics of each headend rack unit. Cardboard dividers are inserted to separate the material into sections allowing for easy on-site removal. The heavy duty triwall cardboard box is then sealed and strapped to a pallet with a metal shipping band. The triwall

box and foam packing keep the overall weight down which saves on shipping costs while providing complete protection to the headend.

To complete the MASTERBUILT process, the Blonder Tongue Technical Solutions Group is available to perform an on-site headend installation to ensure the entire process is truly "turn-key". Semi-annual verification and proof of performance maintenance can keep the headend in peak performing condition.

Contact **Technical Solutions** for questions on MASTERBUILT headends and all your system support needs.



Masterbuilt